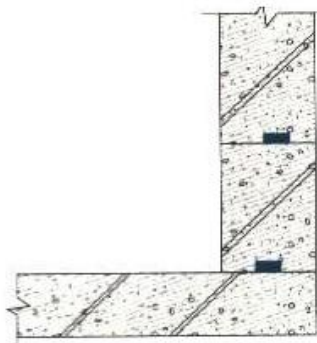
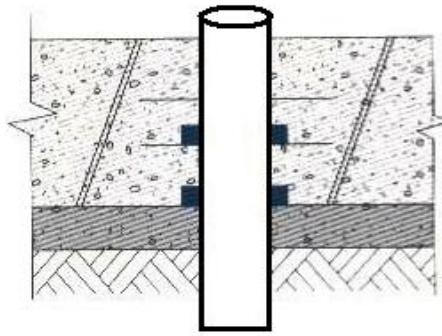


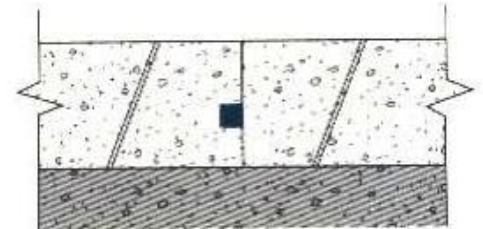
Installation Guide For Swellable Waterstop



Wall Joints

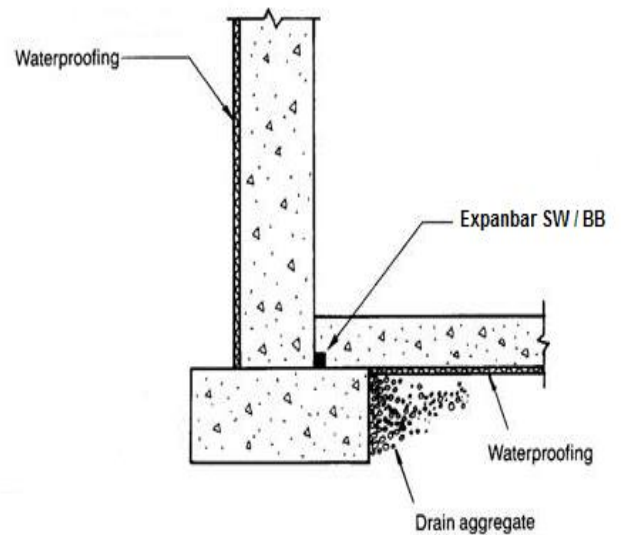
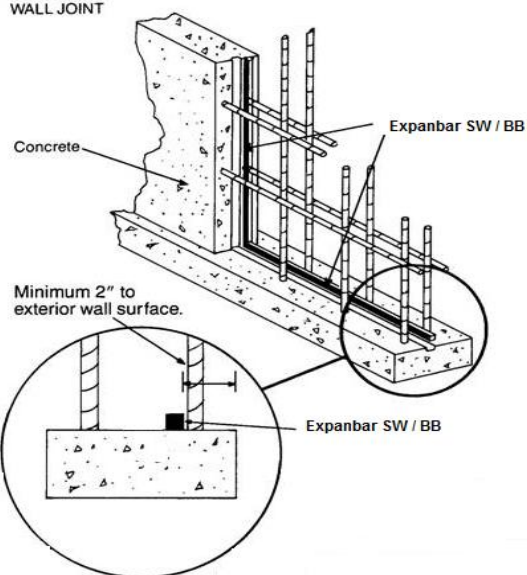


Sealing Pipe Joints



Slab / Mat Joint

FOOTING JOINT
VERTICAL
WALL JOINT



Expansbar **SW20** Installed on Joint

Installation Procedure

Surface Preparation:

- Surfaces should be clean, dry and free from dust, oil, laitance, rocks, rust or other construction debris. Do not install Expanbar in standing water or on an iced substrate.
- Concrete surface should be at-least 24 hours old and fully set, do not apply on concrete which is wet or not properly set.

Adhesive & Installation:

- Apply Expanbar Adhesive or any suitable alternate adhesive material on well prepared concrete surface for the fixing of Expanbar Waterstop.
- Apply adhesive about 10 to 15 mm wide on concrete surface to properly fix the waterstop on centre of joint.
- After allowing adhesive to become tacky, then firmly press the entire length of waterstop on to the adhesive, for vertical and overhead application, firmly press waterstop strip for 2 – 5 minutes to assure proper adhesion.
- Tightly butt the roll ends together to form a continuous waterstop, do not overlap roll ends, place in maximum lengths to avoid number of joints, where required, cut the strip with sharp knife or blade to fit the roll ends together.
- For pipe and critical installation, cut into the required length to fit around the pipe.
- On irregular surfaces such as stone or rough concrete, make sure that waterstop remains in direct contact with the substrate along the entire installation, there should not be any air gap between the waterstop and the substrate.
- Minimum concrete cover on waterstop should not be less than 50 mm; in case of less concrete cover cracks may appear on surface due to swelling force.
- For installation on critical conditions, consult local office for assistance.

Fospak (Pvt) Ltd.

Tel # +92-21-34528477, 34529859

Fax # +92-21-34522436

Email info.khi@fospak.com.pk