



Protect Environment

Always Think

Green



Crack Filling

With

BITU AQUA

CRACK FILLER

“COLD POUR”



Protect Environment

Always Think

Green



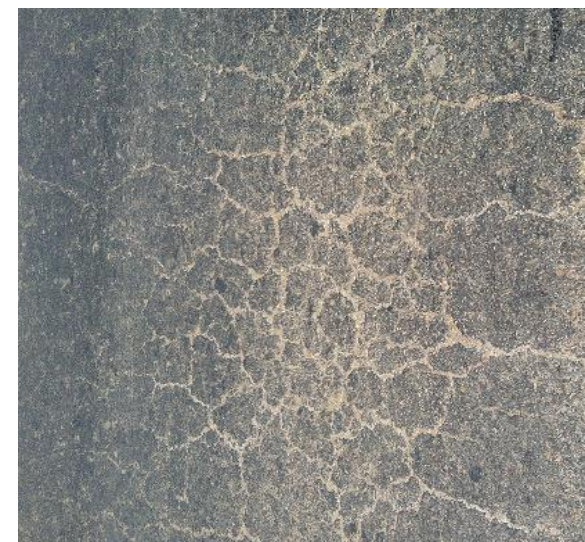
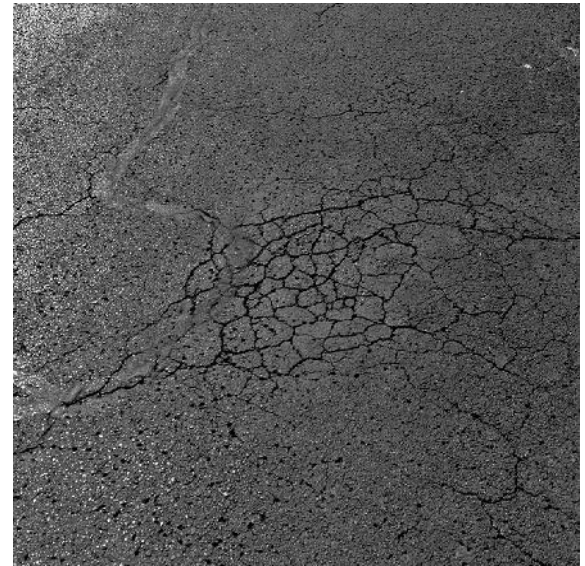
Filling of Asphalt Cracks in roads, driveway or in parking lot surface play a very important role to extend the life of the asphalt pavement.

The most important reasons to repair the cracks in asphalt is, to protect the asphalt pavement by the penetration of moisture/water under the asphalt surface causing more damage to asphalt pavement.

Bituaqua Crack Filler “Cold Pour” is polymer modified bituminous crack filling compound, ideal for the repairing of cracks in roads, pavements, driveways, concrete pavements, parking lots and other **asphalt or concrete** surfaces. It is a cost effective and fast curing asphalt crack repair compound for sealing of weather’s destructive freeze and thaw cycles cracks.

FEATURES & BENEFITS:

- ✓ Solvent free, non toxic and free of dangerous odors
- ✓ Fast drying properties
- ✓ Excellent adhesion properties
- ✓ Excellent crack bridging properties
- ✓ Forms a flexible/tough non tacky seal
- ✓ Excellent water resistance
- ✓ Resistance to sulphates, ground salts, diluted acids





Protect Environment

Always Think

Green



BITUAQUA CRACK FILLER “COLD POUR”

Cold pour crack sealing compound can be applied at ambient temperatures and therefore do not require any heating. **Bituaqua Crack Filler “Cold Pour”**, is more appropriate for cracks of 1 – 10 mm in width. Emulsified asphalt is the most commonly used as cold pour sealant. It is a dispersion of asphalt particles in water with the presence of an emulsifying agent and special polymers that sets due to the evaporation of water when exposed to air. The main advantage of asphalt emulsions is safety, since it typically does not require heating. Additionally, they can be applied during times of high humidity or even when the cracks are moist or damp.



Preparation / Application:

- Remove loose asphalt or debris out of the cracks with air compressor, and properly clean the crack prior to the application.
- Pour **Bituaqua Crack Filler “Cold Pour”** on cracked surface and completely fill/cover the entire surface, keep the material level equal to driveway surface.
- Spread the fine sand on wet surface to become an integral part of **Bituaqua Crack Filler “Cold Pour”**.
- Allow to cure for approximate 2 – 4 hours, traffic should be allow as soon as the surface is tack free.





Protect Environment

Always Think

Green



Standards Compliance: ASTM-D244, ASTM D-977, ASTM D2397

Limitation:

- Surface preparation is very important for the stability of repaired surface, make sure that complete surface is dust free and there is no dust on surface and especially in cracks.
- Immediately after spreading of **Bituaqua Crack Filler “Cold Pour”** spread sand on wet layer as early as possible to get proper seal and crack free surface.
- Properly mix the material prior to the application.

Cleaning of equipments:

- After application clean the tools and equipments with water, if the material is dry remove with any petroleum solvent such as petrol, kerosene or diesel.

REGIONAL SALES OFFICES IN PAKISTAN:

Pakistan Bitumen Company Subsidiary of Fospak (Pvt) Ltd.

Head Office

702, Business Avenue,
Block-6, PECHS.
Shahra-e-Faisal,
Karachi, Pakistan
Tel # +92-21-34528477,34529859
Fax # +92-21-34522436
Email info.khi@fospak.com.pk

Lahore Sales Office

2nd Floor Sarwar Shaheed Plaza,
Cavalry Ground,
Main Boulevard,
Lahore Cantt, Lahore.
Tel # +92-42-36675773
Fax # +92-42-36675838
Email info.lhr@fospak.com.pk

Rawalpindi Sales Office

1st Floor, Al-Harmain Plaza,
Main Murree Road,
Rawalpindi
Tel # +92-51-9290592
Fax # +92-51-9290590
Email info.isb@fospak.com.pk